

14913 ID6 S26: Drawdown from current location = 1.49 ft
Drawdown from proposed location = 1.55 ft
Net drawdown = **0.1 ft**

14913 ID6 S35:	Drawdown from current location = 1.70 ft Drawdown from proposed location = 1.70 ft Net drawdown = 0.0 ft
30565:	Drawdown from current location = 1.95 ft Drawdown from proposed location = 2.02 ft Net drawdown = 0.1 ft
22535:	Drawdown from current location = 1.64 ft Drawdown from proposed location = 1.76 ft Net drawdown = 0.1 ft
14151 ID1:	Drawdown from current location = 1.45 ft Drawdown from proposed location = 1.51 ft Net drawdown = 0.1 ft
14151 ID5:	Drawdown from current location = 2.03 ft Drawdown from proposed location = 2.11 ft Net drawdown = 0.1 ft
23166:	Drawdown from current location = 1.56 ft Drawdown from proposed location = 1.64 ft Net drawdown = 0.1 ft
15961:	Drawdown from current location = 1.35 ft Drawdown from proposed location = 1.48 ft Net drawdown = 0.1 ft
Domestic 1:	Drawdown from current location = 1.35 ft Drawdown from proposed location = 1.43 ft Net drawdown = 0.1 ft
Domestic 2:	Drawdown from current location = 1.83 ft Drawdown from proposed location = 1.83 ft Net drawdown = 0.0 ft

Domestic 3:	Drawdown from current location = 1.84 ft Drawdown from proposed location = 1.87 ft Net drawdown = 0.0 ft
Domestic 4:	Drawdown from current location = 1.84 ft Drawdown from proposed location = 1.84 ft Net drawdown = 0.0 ft
Domestic 5:	Drawdown from current location = 2.37 ft Drawdown from proposed location = 2.46 ft Net drawdown = 0.1 ft
Domestic 6:	Drawdown from current location = 1.86 ft Drawdown from proposed location = 1.92 ft Net drawdown = 0.1 ft
Domestic 7:	Drawdown from current location = 1.90 ft Drawdown from proposed location = 1.97 ft Net drawdown = 0.1 ft
Domestic 8:	Drawdown from current location = 2.19 ft Drawdown from proposed location = 2.31 ft Net drawdown = 0.1 ft
Domestic 9:	Drawdown from current location = 2.50 ft Drawdown from proposed location = 2.60 ft Net drawdown = 0.1 ft
Domestic 10:	Drawdown from current location = 2.48 ft Drawdown from proposed location = 2.58 ft Net drawdown = 0.1 ft
Domestic 11:	Drawdown from current location = 2.21 ft Drawdown from proposed location = 2.33 ft Net drawdown = 0.1 ft

Domestic 12: Drawdown from current location = 1.91 ft
Drawdown from proposed location = 2.02 ft
Net drawdown = **0.1 ft**

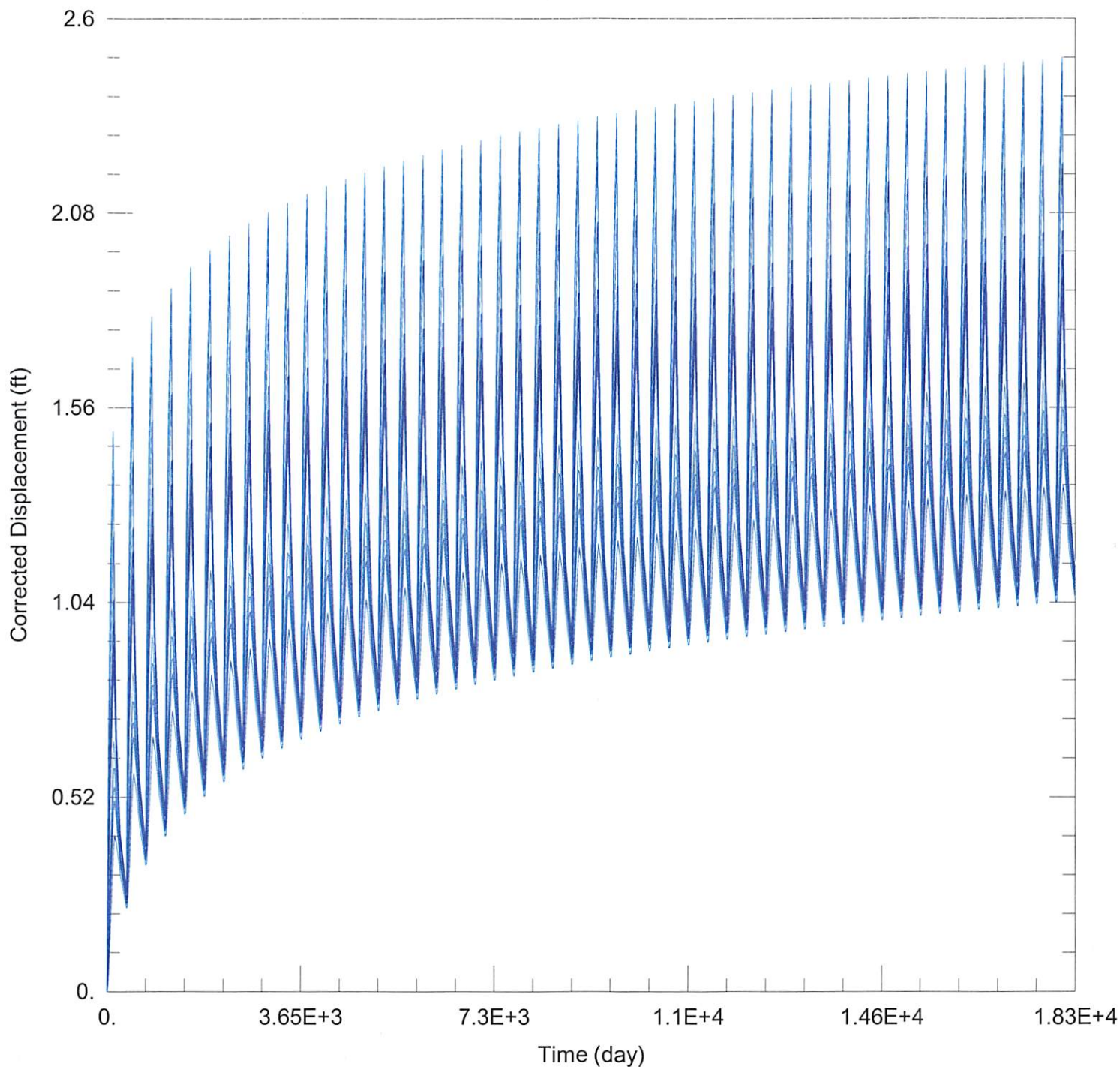
Domestic 13: Drawdown from current location = 1.97 ft
Drawdown from proposed location = 2.10 ft
Net drawdown = **0.1 ft**

Domestic 14: Drawdown from current location = 1.46 ft
Drawdown from proposed location = 1.54 ft
Net drawdown = **0.1 ft**

Net drawdown does not exceed the drawdown allowance of 4.0 ft for any well within 1 mile of the proposed location. Therefore, critical well analysis is not necessary.

Conclusion:

The proposed move is likely to create minimal effects on neighboring wells and appears unlikely to cause impairment. Any concerned neighbors should contact GMD3 at (620) 275-7147 or the Division of Water Resources at (620) 276-2901.



WELL TEST ANALYSIS

Data Set: C:\Users\trevora\Documents\2023_moves\12822\12822 Current.aqt

Date: 02/14/23

Time: 16:53:35

PROJECT INFORMATION

Company: GMD 3

Project: 12822

Location: Finney County

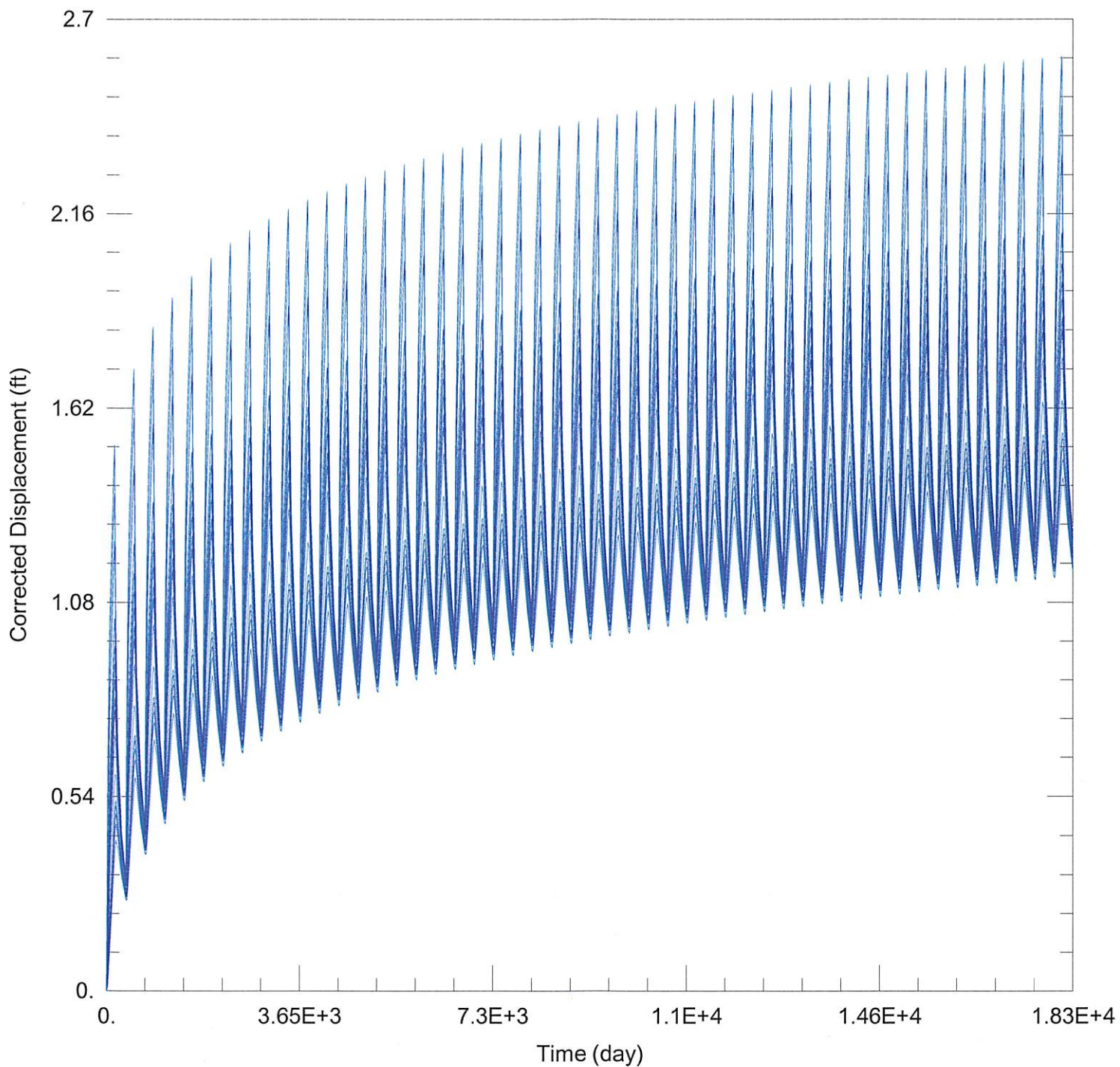
WELL DATA

Pumping Wells

Observation Wells

Well Name	X (ft)	Y (ft)
12822 ID1	-26974	351577

Well Name	X (ft)	Y (ft)
□	-26974	351577



WELL TEST ANALYSIS

Data Set: C:\Users\trevora\Documents\2023_moves\12822\12822 Proposed.aqt

Date: 02/14/23

Time: 16:53:24

PROJECT INFORMATION

Company: GMD 3

Project: 12822

Location: Finney County

WELL DATA

Pumping Wells

Well Name	X (ft)	Y (ft)
12822 ID1	-26974	351577

Observation Wells

Well Name	X (ft)	Y (ft)
□	-26974	351577