

Figure 4.
CHANGE IN SATURATED THICKNESS
AT SECTION CENTERS
IN THE HIGH PLAINS AQUIFER
PREDEVELOPMENT TO 1999-2001



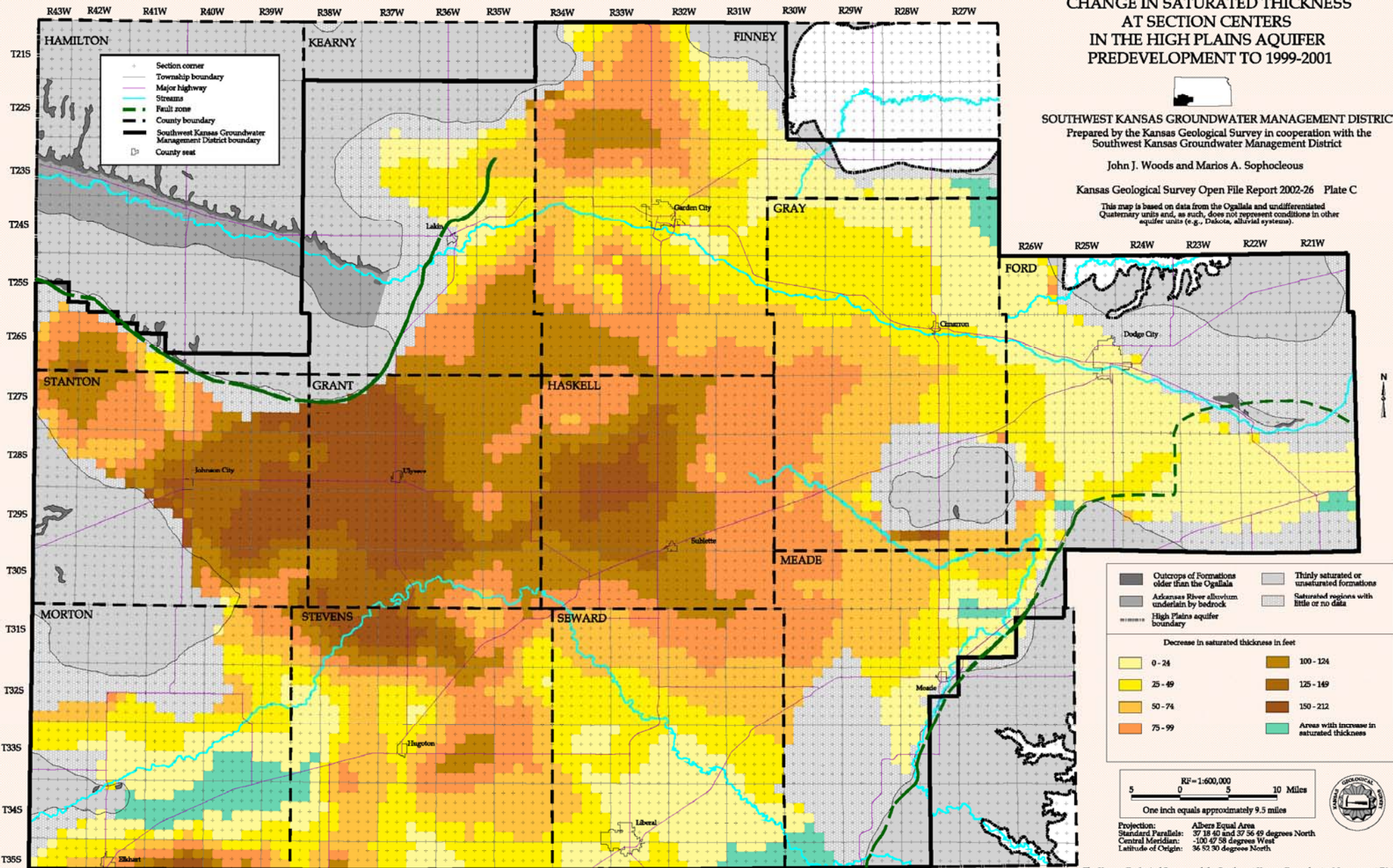
SOUTHWEST KANSAS GROUNDWATER MANAGEMENT DISTRICT

Prepared by the Kansas Geological Survey in cooperation with the
 Southwest Kansas Groundwater Management District

John J. Woods and Marios A. Sophocleous

Kansas Geological Survey Open File Report 2002-26 Plate C

This map is based on data from the Ogallala and undifferentiated
 Quaternary units and, as such, does not represent conditions in other
 aquifer units (e.g., Dakota, alluvial systems).



The Kansas Geological Survey and the Southwest Kansas Groundwater Management District do not guarantee this map to be free from errors or inaccuracies and disclaim any responsibility or liability for interpretations from the map or decisions based thereon.