

**Upper Arkansas River Conservation
Project Reconnaissance Study**

Appendix A

Prepared by:

Spronk Water Engineers Inc.
1000 Logan Street
Denver, CO 80203

and

Wright Water Engineers Inc.
2490 West 26th Avenue, Suite 100A
Denver, CO 80211

August 2005

**TABLE A1: Annual Canal Diversions
Upper Arkansas River Conservation Project Reconnaissance Study**

Year	Frontier (af)	Southside (af)	Great Eastern (af)	Amazon (af)	Farmers (ac)	Garden City (ac)	Total Diversions (ac)
1950	11,370	18,320	28,138	16,876	15,370	5,054	95,127
1951	6,241	15,293	19,482	14,527	7,716	1,845	65,104
1952	9,624	7,740	19,055	8,190	11,223	3,830	59,662
1953	12,645	6,526	29,110	8,928	15,745	2,656	75,609
1954	8,326	7,742	19,730	9,594	12,091	0	57,483
1955	12,134	12,089	39,964	18,131	19,910	2,065	104,294
1956	12,545	6,998	17,568	11,439	12,425	3,700	64,674
1957	9,107	34,326	39,327	20,781	21,630	3,781	128,952
1958	7,348	19,268	15,299	18,609	16,759	2,799	80,081
1959	12,339	20,952	30,512	23,423	22,564	3,508	113,298
1960	4,982	5,862	19,607	10,124	11,986	2,840	55,401
1961	5,253	14,311	24,415	16,441	15,249	1,369	77,038
1962	7,440	12,494	22,064	16,027	17,544	2,464	78,033
1963	6,063	3,070	17,306	6,778	8,140	535	41,893
1964	6,058	4,331	10,582	8,944	6,908	827	37,650
1965	3,830	10,092	25,712	27,437	16,795	0	83,866
1966	4,316	43,314	26,330	57,593	30,829	3,112	165,495
1967	5,793	35,916	21,947	52,226	23,875	3,165	142,923
1968	8,353	10,396	22,945	22,009	17,475	1,946	83,125
1969	4,563	12,007	15,830	26,394	15,079	777	74,650
1970	7,586	21,723	28,023	26,492	16,519	1,423	101,765
1971	10,001	9,342	28,443	14,256	10,955	1,614	74,611
1972	7,012	9,998	20,741	16,294	9,137	921	64,104
1973	5,753	6,978	24,746	17,861	14,789	1,164	71,292
1974	6,624	5,552	11,631	3,590	6,166	461	34,024
1975	6,230	1,386	4,754	4,501	4,911	528	22,310
1976	2,401	2,770	5,530	0	0	0	10,700
1977	3,559	0	2,640	1,503	3,086	0	10,789
1978	4,438	3,443	8,458	5,078	2,370	0	23,787
1979	5,375	0	1,805	0	1,051	0	8,231
1980	9,811	9,400	22,346	12,556	14,245	1,531	69,888
1981	8,608	2,400	2,120	5,155	5,298	760	24,341
1982	7,699	6,938	13,149	9,910	10,225	1,049	48,970
1983	5,516	17,812	32,494	22,322	21,896	2,103	102,142
1984	3,596	20,287	34,958	32,297	19,589	2,314	113,041
1985	4,745	20,210	26,299	34,481	16,245	1,823	103,803
1986	3,616	25,426	41,788	39,823	22,844	3,241	136,739
1987	5,433	22,739	24,028	38,123	21,202	2,902	114,427
1988	6,835	20,200	33,057	40,795	21,128	2,686	124,701
1989	6,941	7,198	22,491	20,079	12,786	1,597	71,091
1990	7,103	5,939	13,309	4,566	11,546	1,722	44,185
1991	6,363	4,534	11,964	5,504	6,732	1,392	36,490
1992	5,405	10,887	13,357	9,985	7,502	1,275	48,411
1993	4,101	8,019	16,550	8,132	13,401	1,265	51,469
1994	5,262	10,233	17,459	13,285	18,078	2,481	66,798
1995	10,506	12,723	17,163	35,993	20,392	2,463	99,240
1996	5,870	16,458	23,841	31,189	18,512	2,882	98,752
1997	6,583	14,272	22,192	29,927	20,146	2,660	95,780
1998	9,070	10,814	17,703	28,714	19,536	1,668	87,505
1999	8,671	11,875	22,158	26,323	13,805	1,360	84,192
Average	6,981	12,412	20,602	18,664	14,068	1,831	74,559
Maximum	12,645	43,314	41,788	57,593	30,829	5,054	165,495
Minimum	2,401	0	1,805	0	0	0	8,231

TABLE A2: Annual Pumping
Upper Arkansas River Conservation Project Reconnaissance Study

Year	Finney County (af)	Kearny County (af)	Total (af)
1950	48,416	6,845	55,261
1951	47,273	5,047	52,320
1952	93,987	23,635	117,622
1953	61,278	11,639	72,917
1954	128,358	31,428	159,786
1955	117,429	28,837	146,266
1956	162,255	42,895	205,150
1957	143,323	23,157	166,480
1958	142,779	21,461	164,240
1959	129,854	22,685	152,539
1960	162,781	37,796	200,577
1961	146,405	29,773	176,178
1962	193,879	45,521	239,400
1963	204,984	53,372	258,356
1964	225,035	61,126	286,161
1965	127,729	24,920	152,649
1966	231,884	39,523	271,407
1967	193,426	34,365	227,791
1968	254,544	63,128	317,672
1969	209,608	53,474	263,082
1970	267,247	72,798	340,045
1971	204,570	56,970	261,540
1972	265,874	73,316	339,190
1973	361,195	108,689	469,884
1974	452,078	145,537	597,615
1975	396,585	125,514	522,099
1976	460,625	146,132	606,757
1977	347,247	111,496	458,743
1978	499,813	158,341	658,154
1979	425,966	136,036	562,002
1980	500,143	155,532	655,675
1981	444,146	139,306	583,452
1982	408,882	126,349	535,231
1983	459,165	136,886	596,051
1984	409,309	113,976	523,285
1985	501,755	144,929	646,684
1986	457,371	124,245	581,616
1987	428,572	117,069	545,641
1988	555,878	158,392	714,270
1989	386,728	147,673	534,401
1990	371,035	156,986	528,021
1991	393,293	165,268	558,561
1992	286,525	131,520	418,045
1993	268,401	124,891	393,292
1994	344,343	147,143	491,486
1995	309,638	130,086	439,724
1996	298,030	131,874	429,904
1997	296,608	133,520	430,128
1998	297,040	133,507	430,547
1999	267,303	135,530	402,833
Average	287,812	91,003	378,815
Maximum	555,878	165,268	714,270
Minimum	47,273	5,047	52,320

Note: 1989-99 is actual pumping
1950-88 is estimated
Only includes lands within the Impact Area
(see Figure 1 for mapped coverage)

FIGURE A1
Upper Arkansas River Conservation Project Reconnaissance Study
Annual Diversions (1950-1999)

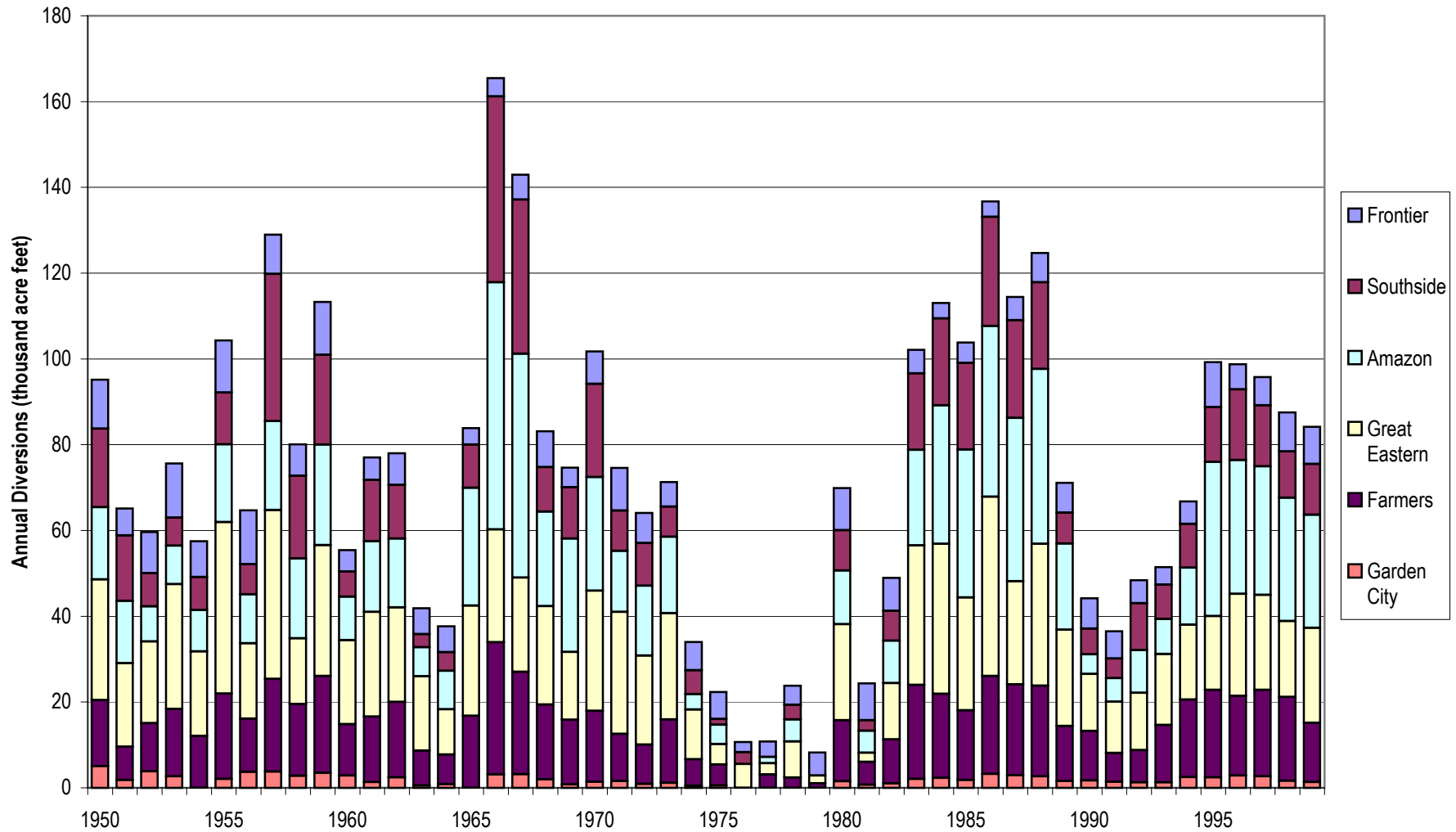


FIGURE A2
Upper Arkansas River Conservation Project Reconnaissance Study
Arkansas R. near Coolidge Streamgauge - Annual Streamflow Totals (1950-2004)

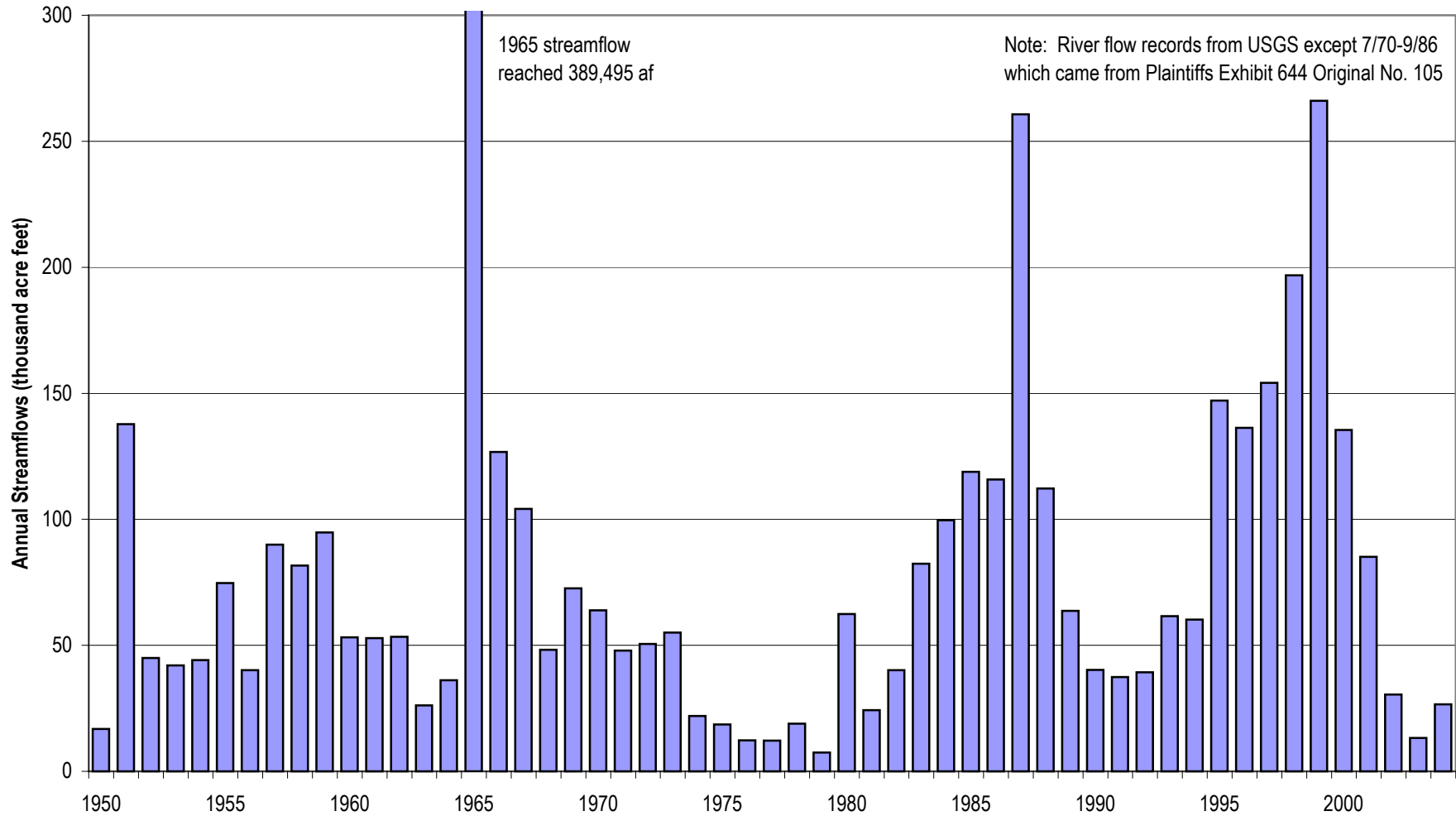


FIGURE A3
Upper Arkansas River Conservation Project Reconnaissance Study
Arkansas R. at Syracuse Streamgauge - Annual Streamflow Totals (1950-2004)

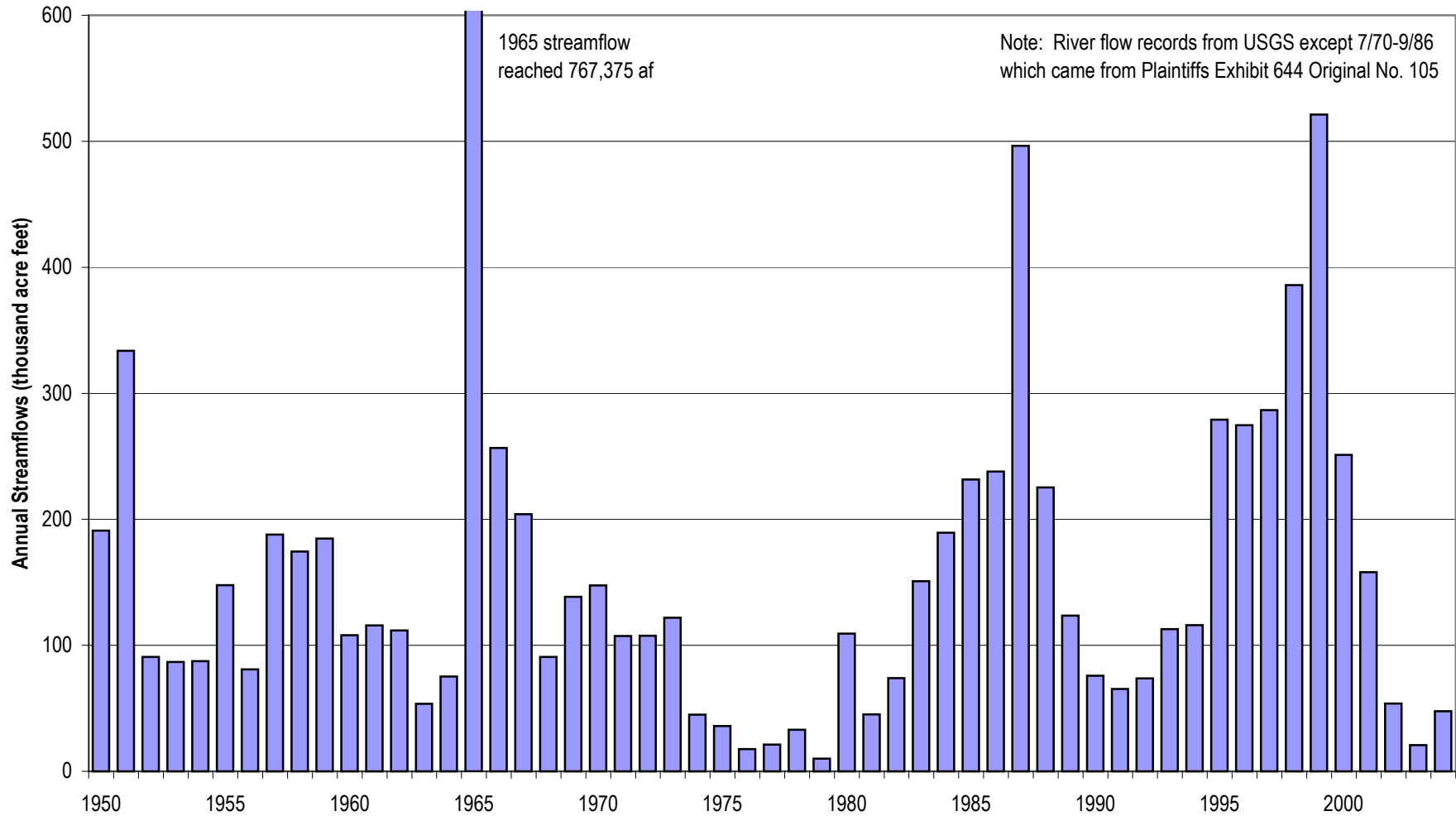


FIGURE A4
Upper Arkansas River Conservation Project Reconnaissance Study
Arkansas R. at Garden City Streamgage - Annual Streamflow Totals (1950-2004)

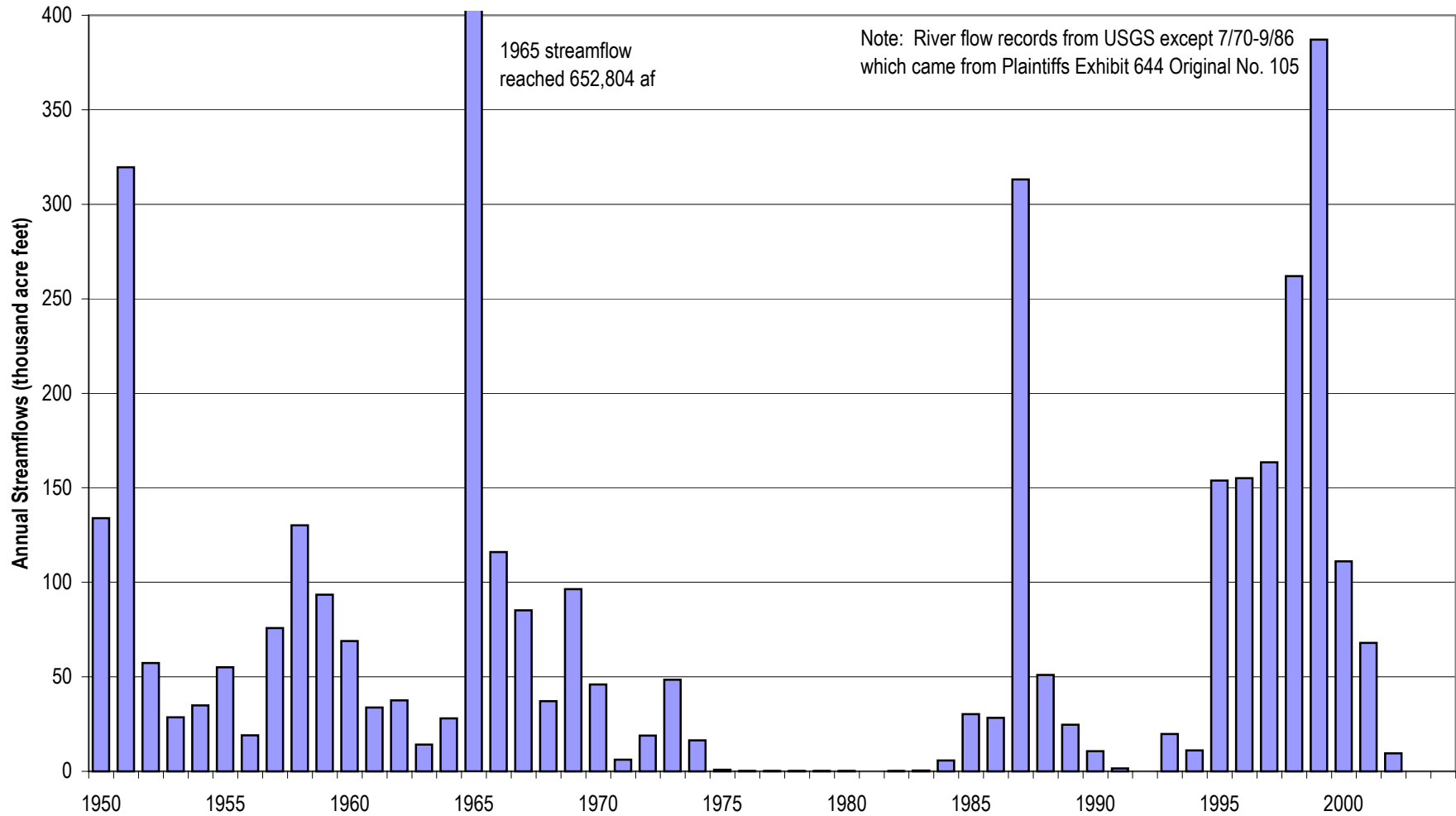


FIGURE A5
Upper Arkansas River Conservation Project Reconnaissance Study
Arkansas R. at Kendall Streamgauge - Annual Streamflow Totals (2000-2004)

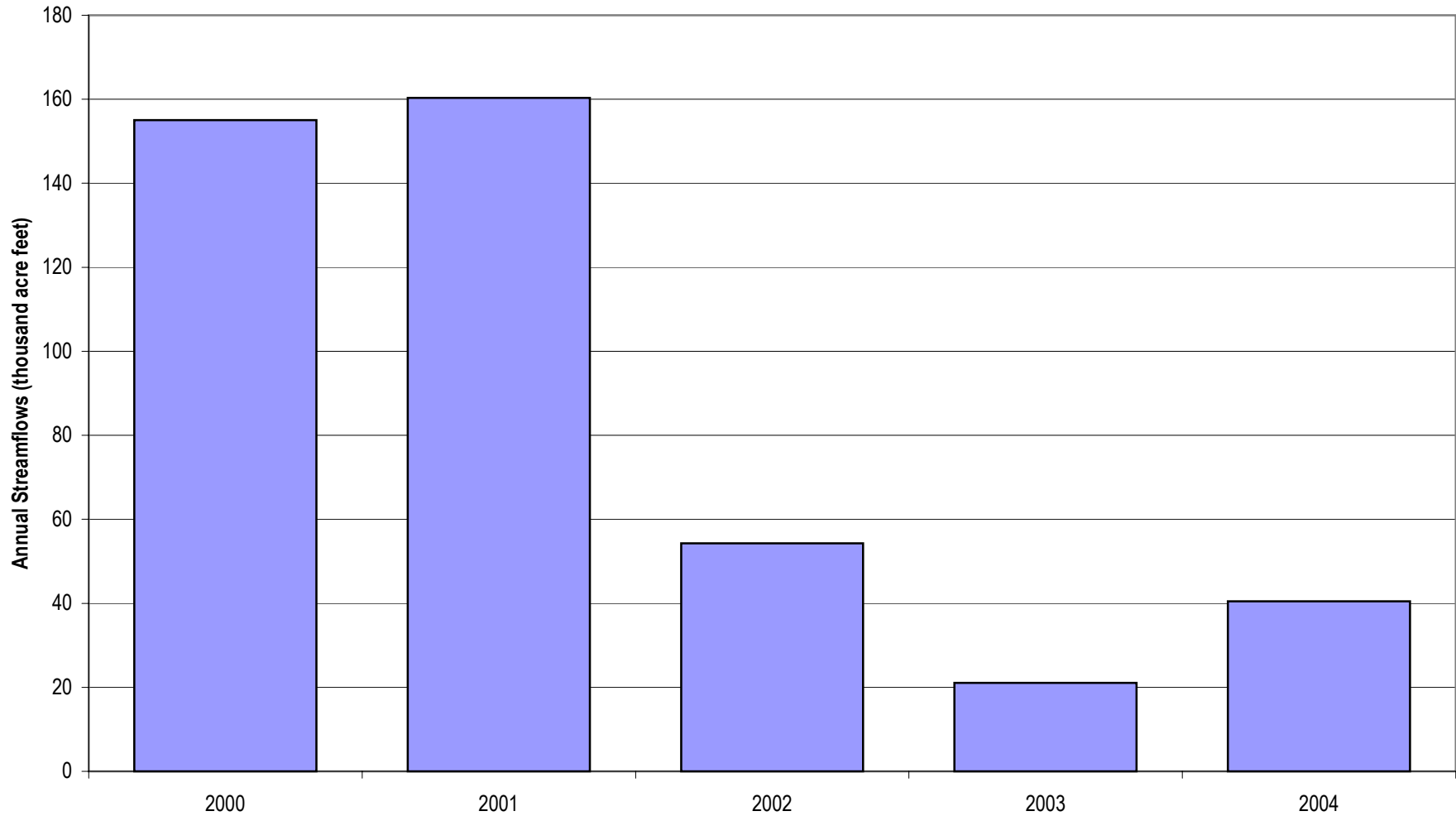


FIGURE A6
Upper Arkansas River Conservation Project Reconnaissance Study
Arkansas R. at Deerfield Streamgage - Annual Streamflow Totals (1998-2004)

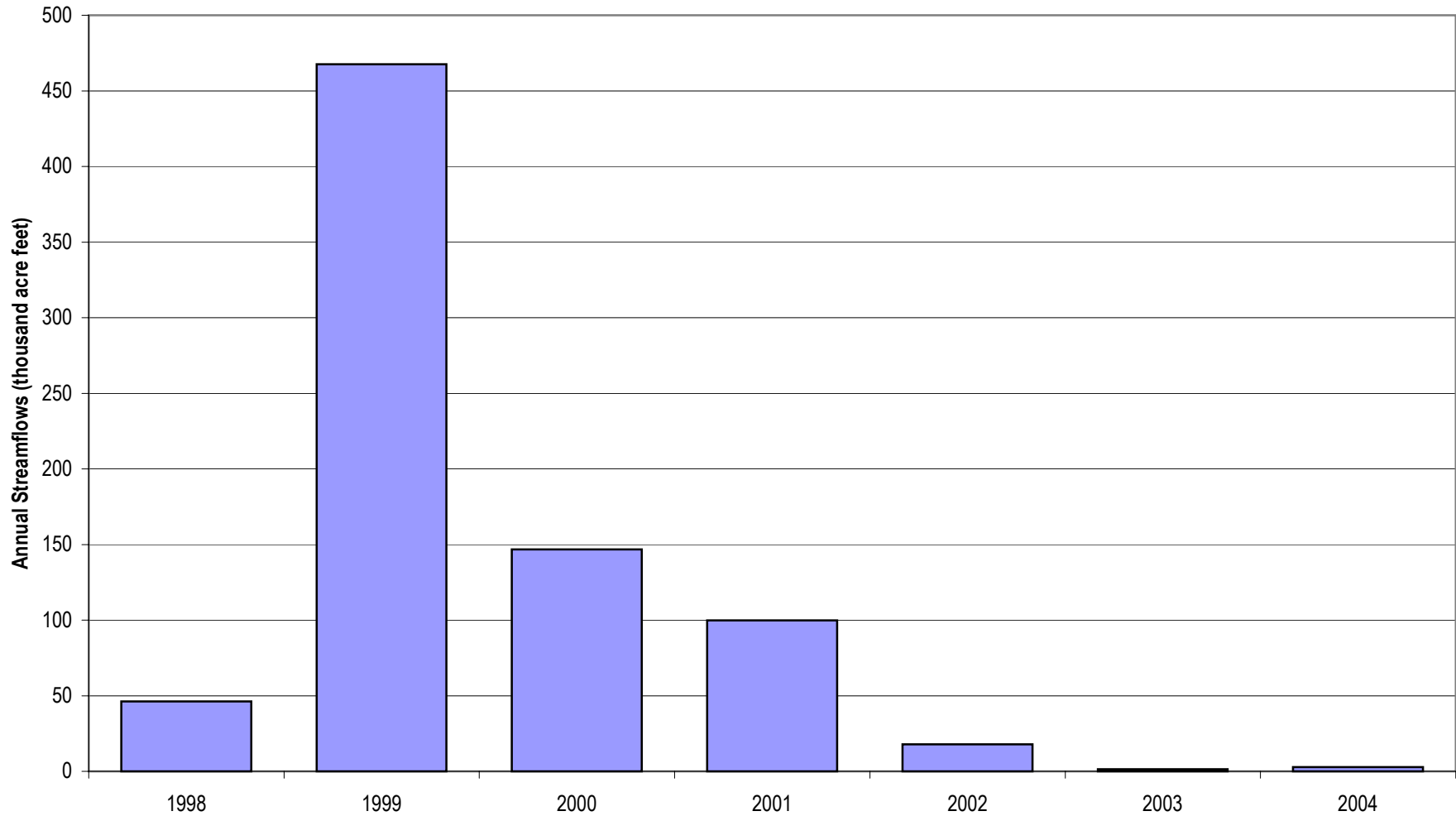


FIGURE A7
Upper Arkansas River Conservation Project Reconnaissance Study
Finney County - Annual Pumping Totals (1950-1999)

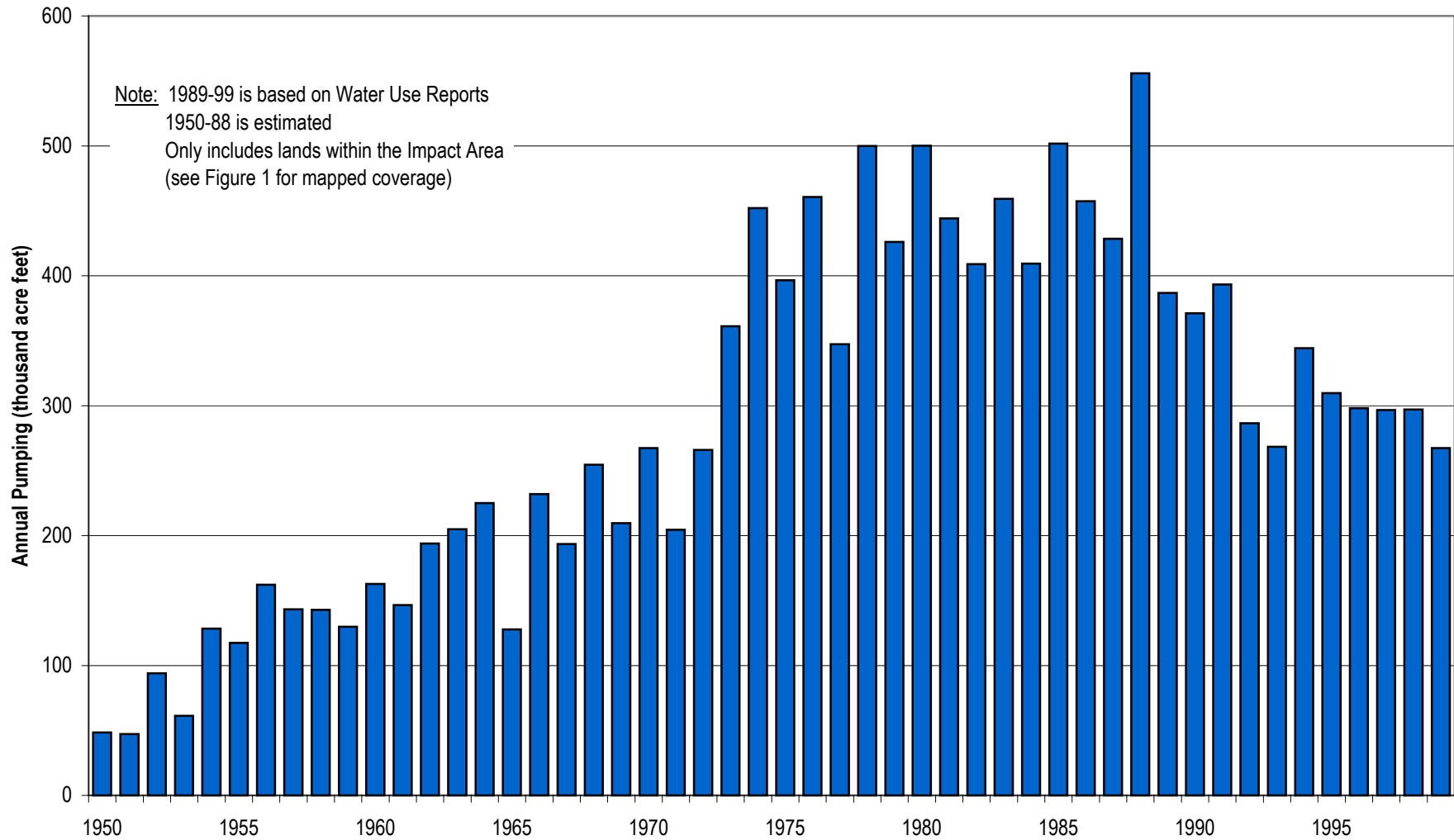


FIGURE A8
Upper Arkansas River Conservation Project Reconnaissance Study
Kearny County - Annual Pumping Totals (1950-1999)

